

THE
RICHWAY
GROUP

A State of The Art

AMETHYST BIOMAT 7000_{MX}

THE BIOMAT IS A PRODUCT OF MODERN TECHNOLOGY
WITH PROVEN EFFICACY
CRAFTED BY HIGHLY SKILLED SCIENTISTS AND ENGINEERS

A BREAKTHROUGH
IN MEDICAL SCIENCE



BIOMAT 7000_{mx}

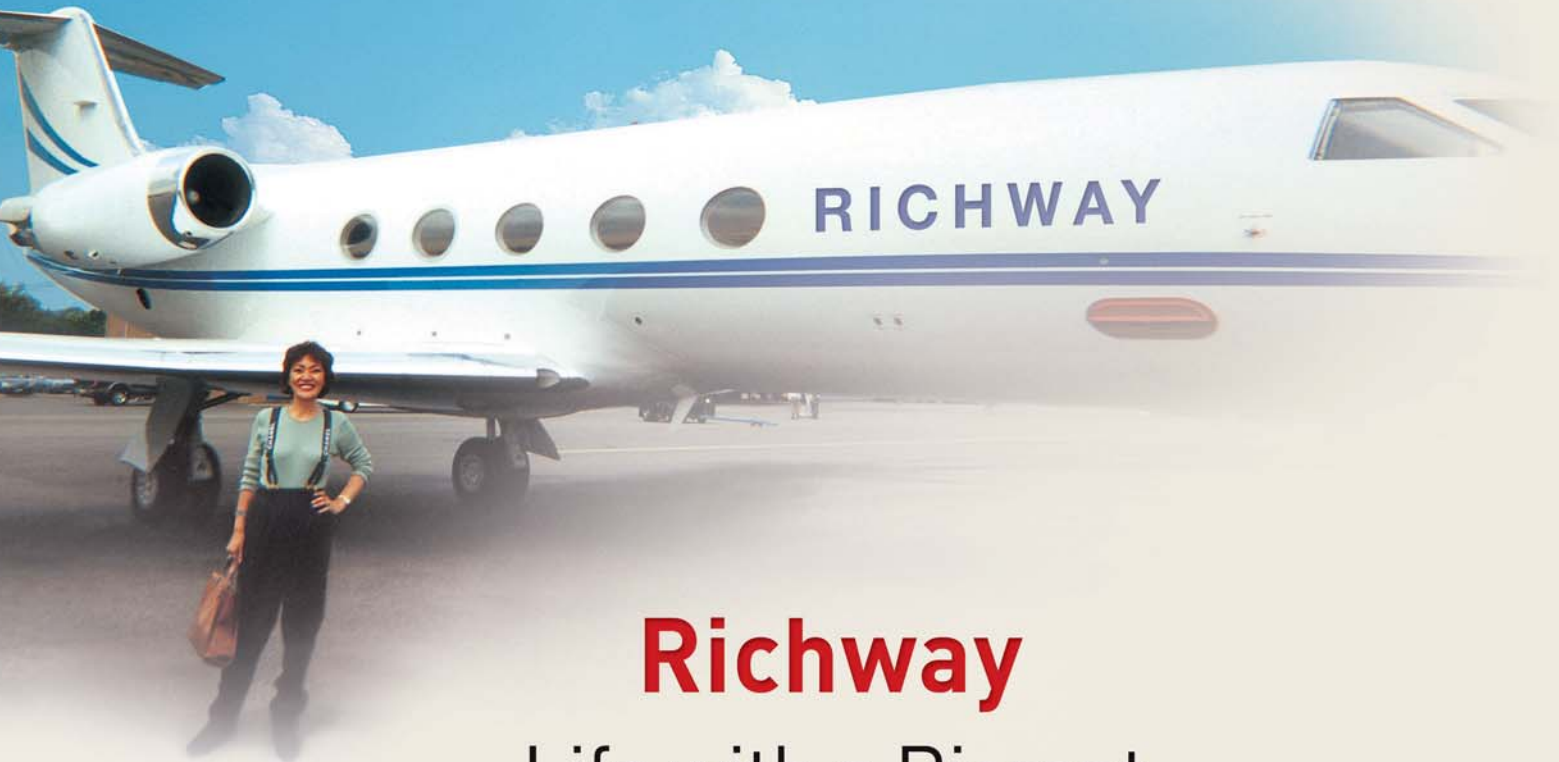
Natural Amethyst Biomat

US FDA Medical Device
Japan FDA Medical Device
Korea FDA Medical Device
CE, CVC, PSE, KMFDS
EAC, GMP, T V
ISO 13485, ISO 9001
P.L.I. (F-2016-0219060)

RICHWAY

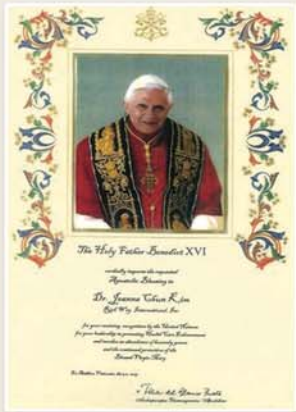
RICHWAY & FUJI BIO INC.

1314 South King Street Suite 520, Honolulu, HI 96814 USA Tel: 808-589-2800 Toll-Free: 855-338-6410 Fax: 808-597-1651
www.richwayandfujibio.com www.richwaykorea.com



Richway

Life with a Biomat



Pope Benedict XVI's blessing for Richway's contribution to health care enhancement.

The Holy Father Benedict XVI cordially imparts the Apostolic Blessing to Dr. Jeanna Chun Kim, Richway International, Inc., for your receiving recognition by the United Nations, for your leadership in promoting Health Care Enhancement and invokes an abundance of heavenly graces and the continued protection of the Blessed Virgin Mary.

May 6, 2009, The Vatican



The United Nations Association Citation of Special Merit

Dr. Jeanna Chun Kim, C.E.O.
Richway International, Inc.

In recognition of her outstanding contributions, dedication in promoting people's health. She has also demonstrated strong leadership and commitments to Primary Health Care Enhancement for the benefit of the needy people and the society at large. In witness thereof in recognition whereof, I have hereunto put my hand and affixed the Official Seal of the United Nations Association, on the 16th of June, 2009, in Jakarta, Indonesia.

Prof. Kernal Roemawi MD, Ph.D.



Recognition from Prince Fushimi of the Japanese Cultural Agency

Richway Japan received an award from Prince Fushimi of the Japanese Cultural Agency for its contribution to promoting health care for the Japanese people.



Richway CEO Jeanna Kim and the Queen of Malaysia

The Malaysian Royal Family uses the Biomat.



Richway's invitation by the U.S. White House

In 2006, Richway was recognized as an excellent company by the President of the United States and the founder was invited to the White House for a dinner party hosted by President Bush.



Richway

Spreading the Message around the World

GREETINGS FROM RICHWAY IN HAWAII

Aloha! Thank you for your recent interest in Richway & Fuji Bio Inc.

We hope that you will find our products of exceptional quality and receive many health benefits from its use. Richway & Fuji Bio Inc. is always seeking to enhance and innovate ways that allow you to live and look both healthy and happy. We create all of our products with cutting-edge technology, engineering, and methodology to meet your expectations of quality, performance and professional design. The Biomat is used by thousands of people all over the world. It has helped to make satisfied users healthier and we feel confident that it will help you with your health concerns as well. Again, thank you for your interest. We appreciate your patronage and wish you a long healthy life with many rich rewards.

Mahalo! Many Warm Regards,

Richway & Fuji Bio Inc., Customer Service





Dear Richway Family

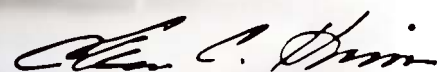
We believe in the power of teamwork.
We believe that with hard work
and passion, anything is possible.
We strive for excellence and integrity
in everything we do.
We recognize the relationship between
our lifestyle and our health,
and the importance of maintaining wellness.

You want to better yourself.
You have a burning desire to succeed.
You demonstrate the most important factors for
success: commitment, a passion to make a
difference, a vision for achieving positive change,
and the courage to take action.

We know our purpose is to make life better and
we hold to our basic creed:
look better, feel better, and live better.
Our products reflect the
scientific advancements of today.
We work to achieve freedom of time and finances.
We serve our communities,
we respect our environment,
and we place our families first.

We strive to be loving, caring human beings,
and we teach what we've learned to anyone
who is open to it.
We believe in Richway,
we believe in what we offer,
and we believe in our purpose.

Warmest regards,



Jeanna Kim
President & CEO
Richway & Fuji Bio Inc.



biomat 7000_{mx}
LIFE WITH A BIOMAT



UNIQUE INNOVATION IN BIO TECHNOLOGY

The Biomat's 17 layers consist of:

- 1 Surface material: Silicon urethane with cotton
- 2 Waterproof layer
- 3 Amethyst layer for transferring natural infrared rays
- 4 Hyron cotton layer for thermal insulation
- 5 TOCA™ layer made with natural tourmaline gemstones
- 6 **Nano Copper fabric layer**
- 7 **Peach and Grape Seed fiber layer for heat preservation**
- 8 Carbon fiber layer for electromagnetic interception
- 9 Copper fabric layer for electromagnetic interception
- 10 Fiberglass layer
- 11 Thermal preservation layer
- 12 Silicon and Teflon reverse currency heating layer with EMF interception
- 13 Nonwoven fabric layer
- 14 Aluminum layer for reflection of infrared rays
- 15 Nonwoven fabric layer for heat preservation
- 16 Thermal protection layer
- 17 Bottom material: High quality cotton with brass pattern



SAFETY SYSTEM



biomat 7000_{mx}

CONTROLLER FEATURES

SOFT TOUCH POWER SWITCH AND TEMPERATURE/TIMER CONTROL

The Biomat 7000mx's control system has many useful functions for setting the temperature, timer, and it even has the most advanced I.C. chip to reduce electromagnetic waves.

Alarm Light

This light will appear if there is any malfunction. If so, check connections to ensure they are secure. Contact the dealer if you are experiencing any issues.

F.I.R. Indicator (Far Infrared Ray)

This light indicates when far infrared rays are electrically produced. This light will come on when you first set the Biomat's temperature. Once the Biomat has reached the set temperature, this light will turn off and the E.D.N.I. light will begin to flash.

E.M.F. Interception Light

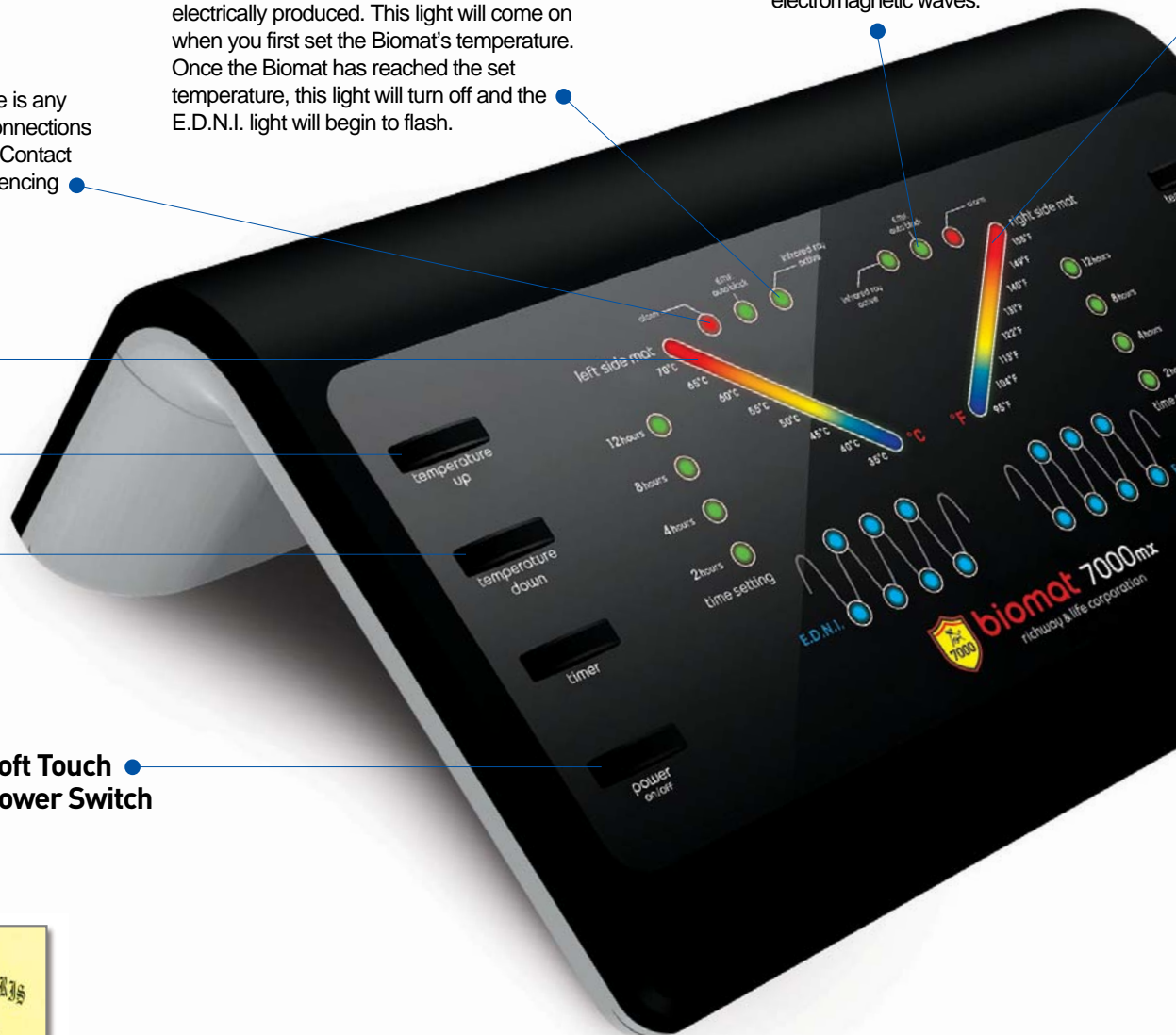
This lights up to indicate the active reduction of harmful electromagnetic waves.

Temperature Indicator (Celsius)

Temperature Up

Temperature Down

Soft Touch Power Switch



Awarded Best Medical Device in 2010

Grand prize in the medical device field by the Royal Swedish Academy of Sciences



US FDA
Medical Device



Japan FDA
Medical Device BG 10300403



Korea MFDS
Medical Device A83080.01[2]

● **Temperature Indicator (Fahrenheit)**

● **Timer Control**

This indicates the usage time before the Biomat turns off. Pressing the button will change the timer setting.



✓ RICHWAY BIOMAT CERTIFICATES

ZERTIFIKAT ◆ CERTIFICATE ◆ 注册证书 ◆ CERTIFICADO ◆ CERTIFICAT



Product Service

CERTIFICATE
No. Z2 15 03 88878 006

Holder of Certificate: Richway & Fuji Bio Inc.
1314 South King Street, Suite 520
Honolulu, Hawaii 96814
USA

Production Facility(ies): 88878

Certification Mark: 

Product: Electric pads (HEATING PAD)

Model(s): BIOMAT PROFESSIONAL

Parameters:
Rated input voltage: 120 V~
Rated frequency: 60 Hz
Rated input power: 180 W

Tested according to: IEC 62233(ed 1)
EN 62233:2008

The product was tested on a voluntary basis and complies with the essential requirements. The certification mark shown above can be affixed on the product. It is not permitted to alter the certification mark in any way. In addition the certification holder must not transfer the certificate to third parties. See also notes overleaf.

Test report no.: CPSA01093815

Valid until: 2020-03-17

Date: 2015-03-18 (Brian Cha) 

Page 1 of 1




TÜV SÜD Product Service GmbH · Zertifizierungsstelle · Rabenstraße 65 · 80333 München · Germany

TÜV's EMF Safety Certificate

The United States of America



CERTIFICATE OF REGISTRATION
PRINCIPAL REGISTER

The Mark shown in this certificate has been registered in the United States Patent and Trademark Office to the named registrant.

The records of the United States Patent and Trademark Office show that an application for registration of the Mark shown in this Certificate was filed in the Office; that the application was examined and determined to be in compliance with the requirements of the law and with the regulations prescribed by the Director of the United States Patent and Trademark Office; and that the Applicant is entitled to registration of the Mark under the Trademark Act of 1946, as Amended.

A copy of the Mark and pertinent data from the application are part of this certificate.

This registration shall remain in force for TEN(10) years, unless terminated earlier as provided by law, and subject to compliance with the provisions of Section 8 of the Trademark Act of 1946, as Amended.



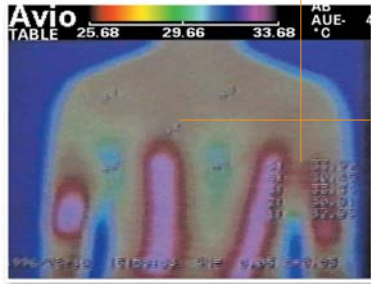


Director of the United States Patent and Trademark Office

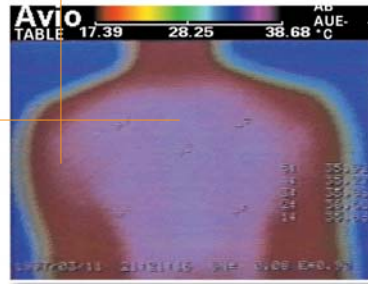
US Trademark Registration Number 2555064

Comparison of Normal Heat and Biomat Far Infrared Rays

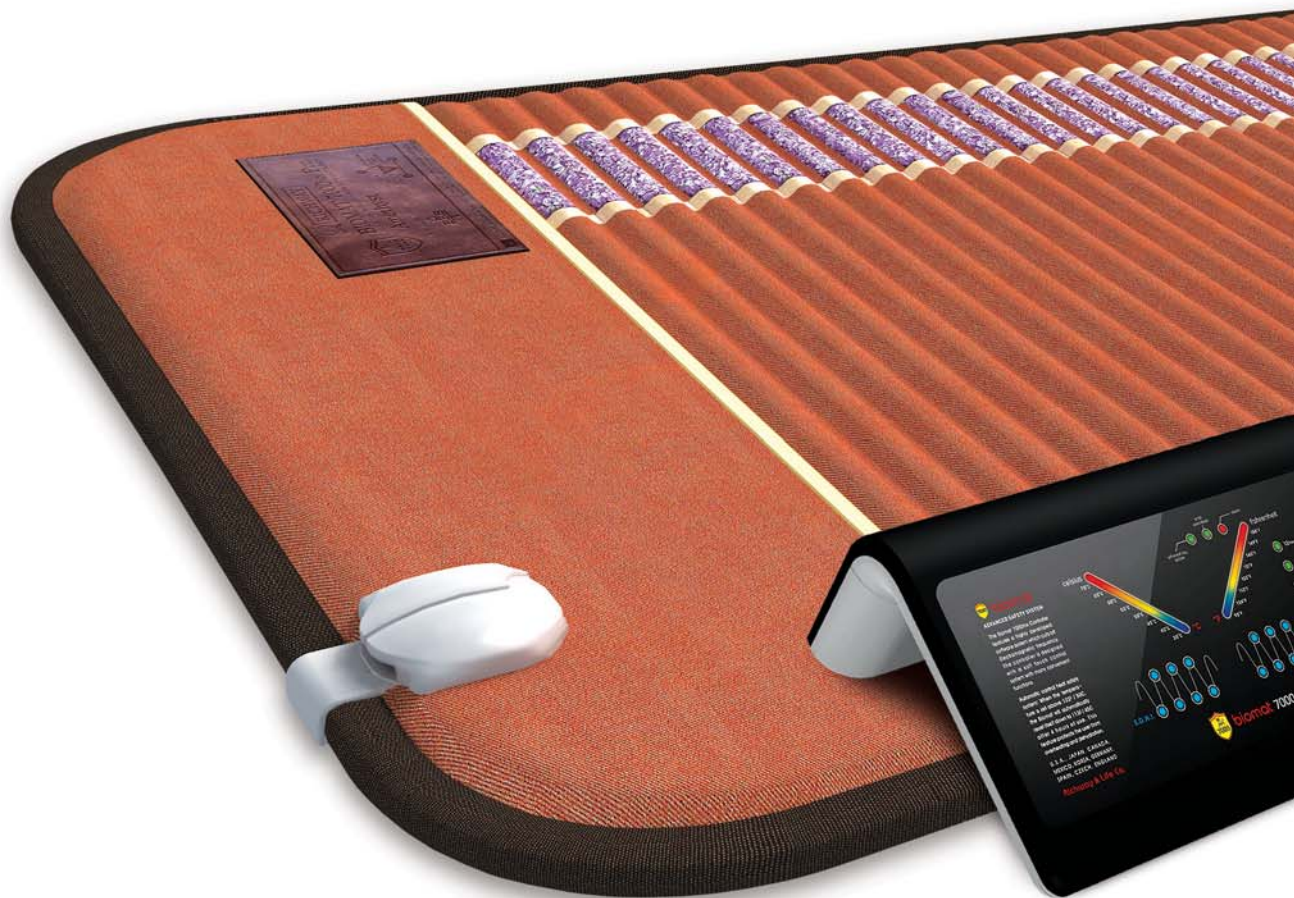
After using a conventional heating pad for 10 minutes
Only the outer surface of the skin is affected in this area



After 5 minutes of using far infrared rays
Far infrared rays can penetrate the skin much deeper compared to other types of heat



There are two types of heating applications here. One is the simple application of a conventional heating pad, while the other is the result of far infrared rays. One of the main focuses of attention during the 21st century will be on these methods of heating the body using far infrared rays.



Richway Biomat Licenses and Certificates



U.S. FDA
U.S. Food and Drug Administration Approved Medical Device



KOREA MFDS
Korea Ministry of Food and Drug Safety Medical Device A83080.01[2]



JAPAN FDA
Japan Ministry of Health, Labour and Welfare Medical Device BG10300403



ISO 13485
International Medical Device Manufacturer



ISO 9001
International Electric Equipment Manufacturer

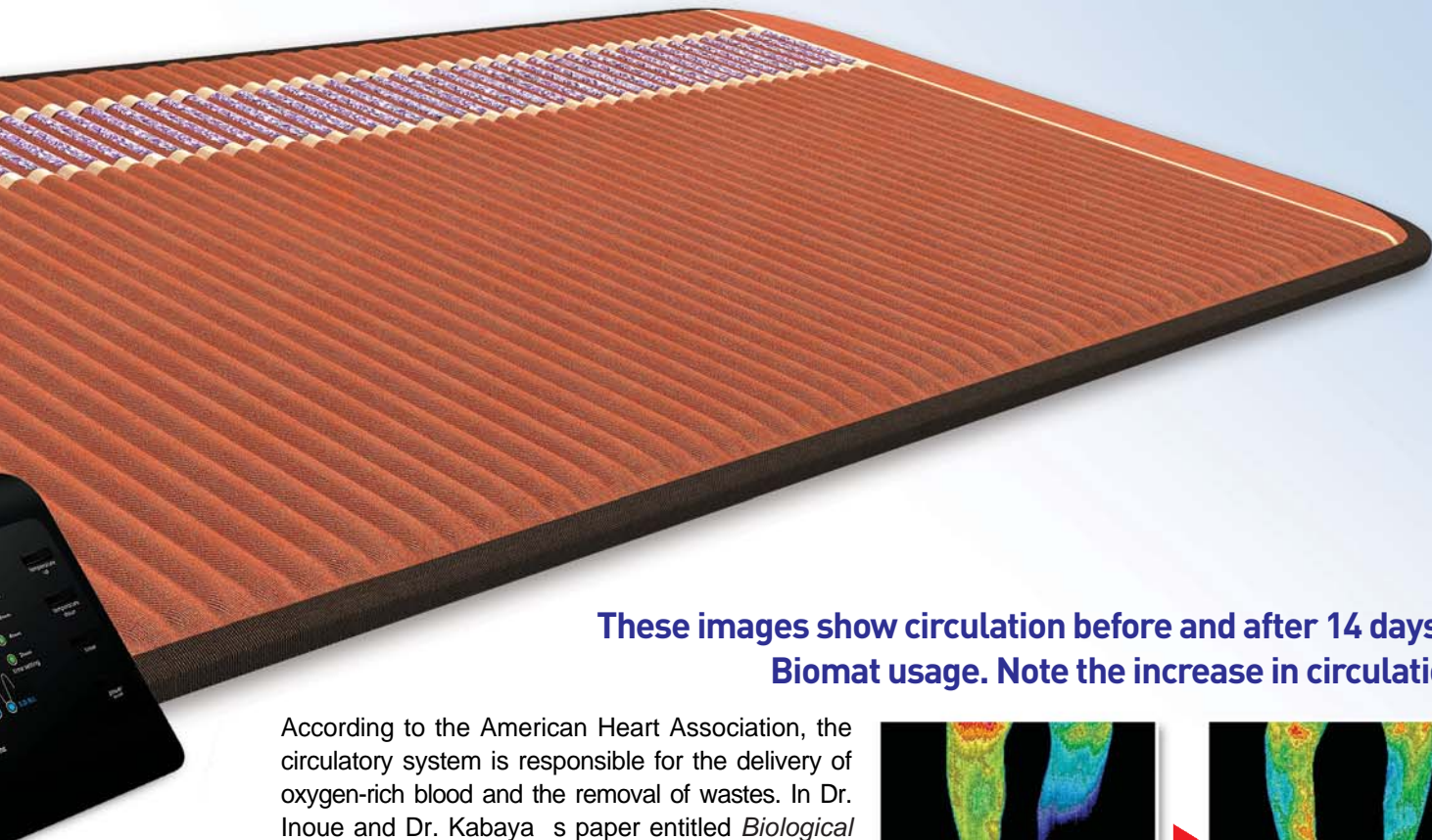
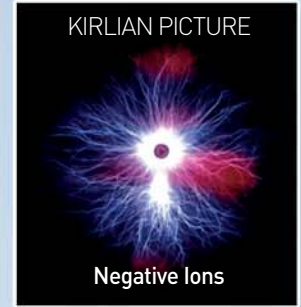
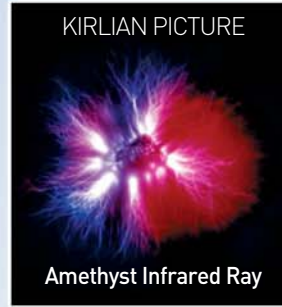


GMP
Good Manufacturing Practice Approval Number 3965 (KGMP : 1-D2337)

✓ What is EMF?

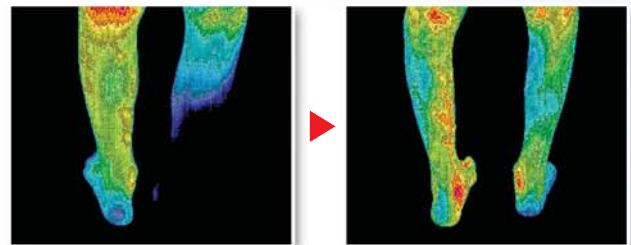
EMF (Electromagnetic Fields) is a term used to describe the invisible electric and magnetic fields radiating away from man-made alternating electrical current. EMF radiates from all electrical appliances in the home, office or factory, in cars, trucks, buses and overhead tram and train lines.

All Biomat products have been tested by T V S D for Electromagnetic Fields and were found to be in compliance with IEC 62233 (ed.1) and EN 62233:2008.



These images show circulation before and after 14 days of Biomat usage. Note the increase in circulation.

According to the American Heart Association, the circulatory system is responsible for the delivery of oxygen-rich blood and the removal of wastes. In Dr. Inoue and Dr. Kabaya's paper entitled *Biological Activities Caused by Far-Infrared Radiation*, far infrared rays have been found to have a blood circulation-enhancing effect in human skin and eventually induces an increase in temperature of the body tissues.



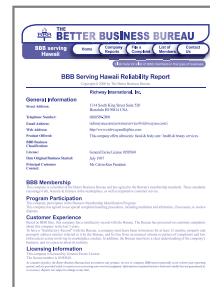
CE
International Electrical Safety
Approval Number EUI-SI
CE2013-0142



Korean Electrical Safety
Korean Electrical Safety Number
PRO: HH071485-13002A
MINI: HH071485-13001A



Japan Electrical Safety
Japan Electrical Safety Number
HW 2013-0145



BBB
Better Business Bureau



Russia CU Electrical Safety
License



CVC CVC
Permitted by the Chinese
Electrical Safety Authority
CVC15008000012



RICHWAY biomat 7000_{mx} A STATE OF THE ART

Amethyst Biomat® Professional

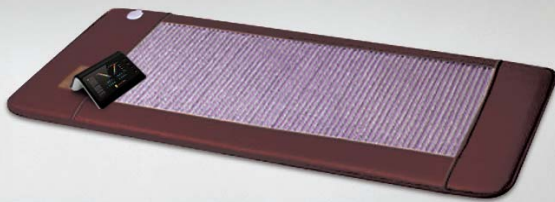
Includes: Biomat, Controller, Cotton Pad, Carry Case



Amethyst BMP Size	700 x 1850 mm / 27.56" x 72.84"
Net Weight	11 kg / 24.25 lbs. without controller
Electric Consumption	180 W
Voltage	AC 120
Performance	Temperature 35-70° C / 95-158° F
Amethyst Size	3 mm - 5 mm
Amethyst Weight	7.5 kg / 16.53 lbs.
Amethyst Color	Natural, Violet, Clear
Cut & Shape	Tumbled
Polariscope Test	D.R.
Refractive Index	1.544-1.553

Amethyst Biomat® Single

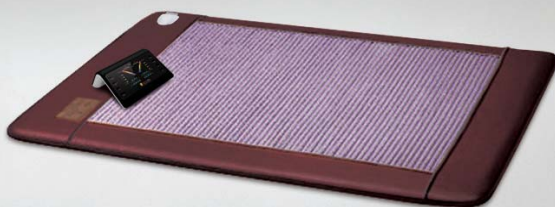
Includes: Biomat, Controller, Cotton Pad, Bag



Amethyst Single Size	1000 x 2000 mm / 39.38" x 78.76"
Net Weight	17 kg / 37.47 lbs. without controller
Electric Consumption	180 W
Voltage	AC 120
Performance	Temperature 35-70° C / 95-158° F
Amethyst Size	3 mm - 5 mm
Amethyst Weight	9 kg / 19.84 lbs.
Amethyst Color	Natural, Violet, Clear
Cut & Shape	Tumbled
Polariscope Test	D.R.
Refractive Index	1.544-1.553

Amethyst Biomat® Queen

Includes: Biomat, Controller, Cotton Pad, Bag



Amethyst Queen Size	1400 x 2000 mm / 55.12" x 78.76"
Net Weight	27 kg / 59.52 lbs. without controller
Electric Consumption	360 W
Voltage	AC 120
Performance	Temperature 35-70° C / 95-158° F
Amethyst Size	3 mm - 5 mm
Amethyst Weight	15 kg / 33.06 lbs.
Amethyst Color	Natural, Violet, Clear
Cut & Shape	Tumbled
Polariscope Test	D.R.
Refractive Index	1.544-1.553

Amethyst Biomat® King

Includes: Biomat, Controller, Cotton Pad, Bag



Amethyst King Size	1800 x 2000 mm / 70.87" x 78.76"
Net Weight	33 kg / 72.75 lbs. without controller
Electric Consumption	360 W
Voltage	AC 120
Performance	Temperature 35-70° C / 95-158° F
Amethyst Size	3 mm - 5 mm
Amethyst Weight	17.5 kg / 38.58 lbs.
Amethyst Color	Natural, Violet, Clear
Cut & Shape	Tumbled
Polariscope Test	D.R.
Refractive Index	1.544-1.553

A BREAKTHROUGH IN MEDICAL SCIENCE

Amethyst & Tourmaline Biomat® Mini

Includes: Biomat, Controller, Cotton Pad, Carry Case



Amethyst Mini Size 500 x 850 mm / 19.69" x 33.47"
Net Weight 3.6 kg / 7.93 lbs. without controller
Electric Consumption 100 W
Voltage AC 120
Performance Temperature 120V: 40-70°C / 104-158°F
 220V: 30-70°C / 86-158°F

Amethyst Size 3 mm - 5 mm
Amethyst Weight 1.2 kg / 2.64 lbs.
Amethyst Color Natural, Violet, Clear
Tourmaline Size 3 mm - 5 mm
Tourmaline Weight 1.2 kg / 2.64 lbs.
Tourmaline Color Black
Cut & Shape Tumbled
Polariscope Test D.R.
Refractive Index 1.544-1.553

Amethyst & Tourmaline Pillow

Includes:
 Memory Foam Pillow,
 Amethyst &
 Tourmaline Cover,
 Cotton Cover



Pillow Size 485 x 300 x 105 mm / 19.09" x 11.81" x 4.13"
Net Weight 2.5 kg / 5.51 lbs.
Amethyst Size 3 mm - 5 mm
Amethyst Weight 0.6 kg / 1.32 lbs.
Amethyst Color Natural, Violet, Clear
Tourmaline Size 3 mm - 5 mm
Tourmaline Weight 0.6 kg / 1.32 lbs.
Tourmaline Color Black

Elastic Polyurethane Memory Foam Pillow

Tourmaline has a complex chemical composition, abundant in boron and aluminum silicate minerals of variable composition. Tourmaline comes in a wide range of colors, depending on its mineral composition.

Bio-belt™

Includes:
 Bio-belt,
 Controller



Bio-belt Size Reg 127 x 1400 mm / 5" x 55.11"
 XL 127 x 1600 mm / 5" x 62.99"

Infrared Ray Heating Part 460 x 210 mm / 18.11" x 8.26"

Net Weight Reg 1.1 kg / 2.31 lbs.
 without controller
 XL 1.2 kg / 2.57 lbs.
 without controller

Heating Part 0.77 kg / 1.69 lbs.

Electric Consumption 50 W

Voltage AC 120(50/60Hz)

Performance Temperature 35-65°C / 95-149°F

Quantum Energy Pad

Includes:
 Quantum
 Energy
 Pad



Size **Pro** 700 x 1850 mm / 27.56" x 72.84"
Single 1000 x 2000 mm / 39.38" x 78.76"
Queen 1500 x 2000 mm / 59.05" x 78.76"
King 1800 x 2000 mm / 70.87" x 78.76"

Cover Microfiber Fabric, 100% Polyester

Cushion 100% Polyester, 3D Mesh

The new and improved Quantum Energy Pad is designed to bring additional comfort to Biomat users. The fabric is soft, smooth and easy to clean. Our special Bio Clay memory foam evenly distributes your weight and contains ochre, which has anti-microbial enzymes that do not promote the growth of bacteria.



RICHWAY

The name you can trust!

**We believe that people must be healed
from their wounds, renewed in spirit,
restored from illness, enlightened from ignorance,
and saved from pain.**

No one should be left behind.

**Our beauty does not lie in our appearance,
but in our passion of caring for others.**

**THE
RICHWAY
GROUP**

RICHWAY & FUJI BIO INC. 1314 SOUTH KING STREET SUITE 520, HONOLULU, HI 96814 USA
TEL: +1-808-589-2800 TOLL-FREE: +1-855-338-6410 FAX: +1-808-597-1651 WWW.RICHWAYANDFUJIBIO.COM
SHAOXING RICHWAY TRADING CO., LTD. ROOM 2703, ZHONGYANG BUILDING, YUMIN ROAD, KEQIAO DISTRICT, SHAOXING, ZHEJIANG, CHINA 312000 TEL: +86-575-8110-1350 FAX: +86-575-8110-1370
RICHWAY EUROPE B.V. BEECHAVENUE 54-80, 1119 PW SCHIPHOL-RJK, NETHERLANDS TEL: +31-(0)20-658-6231 / +31-(0)20-303-3411 (international use) FAX: +31-(0)20-658-6142
RICHWAY & LIFE JAPAN CORPORATION 2-6-41 NAKAHATA, ONOJO-SHI, FUKUOKA, JAPAN 816-0921 TEL: +81-92-575-1004 FAX: +81-92-575-1006
R&L CORPORATION 11F, ACE GWANGMYEONG TOWER B, 108 HAAN-RO, GWANGMYEONG-SI, GYEONGGI-DO, KOREA 14319 TEL: +82-2-6112-7700 WWW.RICHWAYKOREA.COM
CANADA, ENGLAND, AUSTRALIA, NORWAY, FRANCE, GERMANY, SWEDEN, RUSSIA, UKRAINE, CZECH REPUBLIC, BRAZIL, COLOMBIA, INDONESIA, HONG KONG, TAIWAN.